

..... [**Not the biggest,
just the BEST**]



www.premetec.com.tw



YEU CHUEH INDUSTRY CO., LTD.

9, Ton 1 Street, Youth Industry Park, Tachia,

Taichung 43770, Taiwan R.O.C

Tel: 886-4-26814791

Fax: 886-4-26810599

Web Site: www.premetec.com.tw

E-mail: premetec@tcts.seed.net.tw



**Everything
Is
Possible**



YEU CHUEH INDUSTRY CO., LTD.



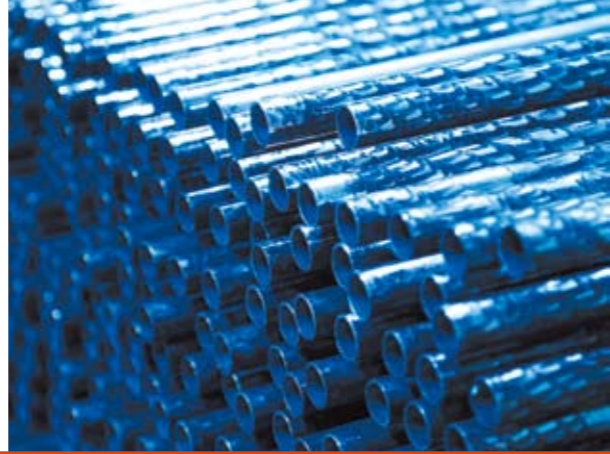
Business Philosophies of PREMETEC

Integrity is our first priority
Always maintaining a consistent focus on our core business
Building the best quality into all aspects of our business
Treat customers as partners
Long-term vision and strategies
Culture of continuous improvement

Index

Development of PREMETEC	3
Quality Is Our Commitment	4
The Best OEM / ODM Factory	5
Integrated Capability, From Tubing To Branding	7
PREMETEC New Innovation-PMX	8
Handle Bars	9
Suspension Fork Tube	13
Hydro-Forming Tubes	14



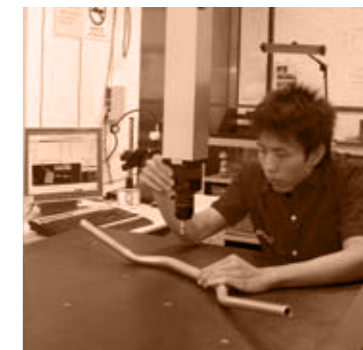
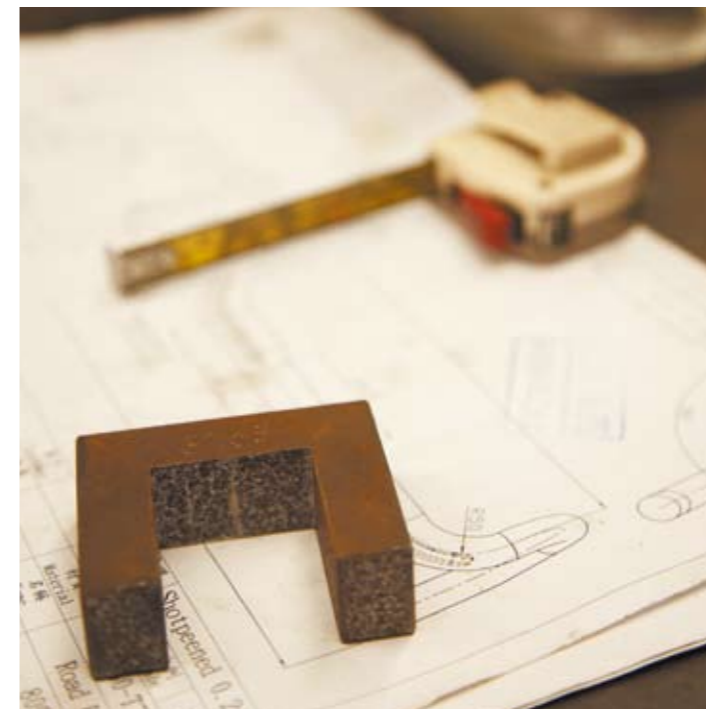
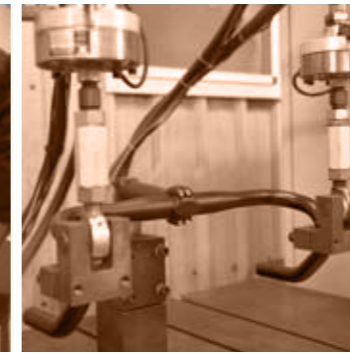


Development of PREMETEC

Quality Is Our Commitment

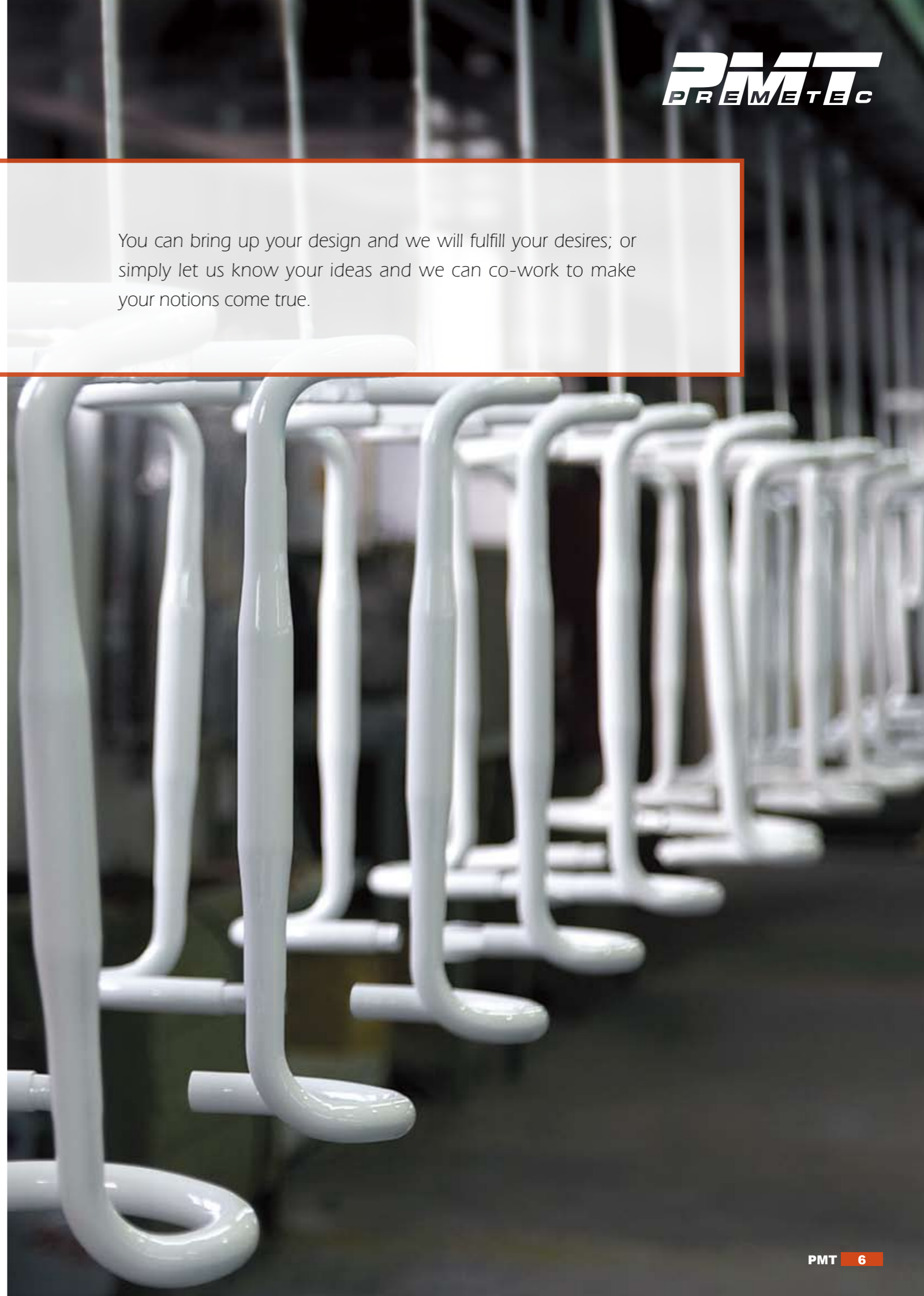
Quality is always the first thing we concern about. Therefore we provide our customers the world class quality and technical services. Good QC system and efficient production management are keys how we hold the position of the most excellent OEM/ODM factory in the world.

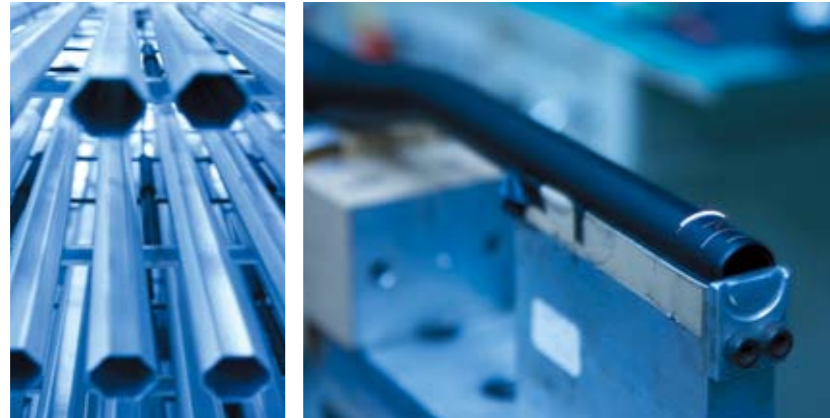
- 1990** With professional background in aluminum and chromoly tubing, a group of engineers founded Yeu Chueh Industry Co., LTD which supplied chromium and aluminum tubing to bicycle frame makers.
- 1992** A series of aluminum handlebars were successfully designed and produced. Registration of the brand name PREMETEC (PMT) was granted.
- 1994** PREMETEC continues to grow despite strong competition from other handlebar and tubing makers, PREMETEC products were gradually approved and used by both international and domestic bike makers.
- 1997** High strength alloy (2014 & 7075) was adopted by PREMETEC successfully. More products were launched and OE customers were attracted by PREMETEC reputation in manufacturing high strength products.
- 2000** Hydro Forming technology was successfully developed and applied to products such as frame tube, handlebar and seat-post. PREMETEC is the first company in Asia which apply Hydroforming technology into bicycle industry.
- 2002** Earned Taiwan Government "SBIR" fund support for Hydro-forming technology application study. Motorcycle business was successfully established and starting moving into supplying the worldwide market.
- 2004** Started to supply motorcycle handlebars to OEM factories and suspension fork tubing to several famous suspension fork brands in bicycle field.
- 2007** Carbon Fiber capability were established.
- 2009** Certificated by ISO/TS16949.
- 2010** PREMETEC continues to expand and grow its business worldwide as more and more world-class brands recognize PREMETEC's unique capability and commitment to quality



The Best OEM / ODM Factory

You can bring up your design and we will fulfill your desires; or simply let us know your ideas and we can co-work to make your notions come true.



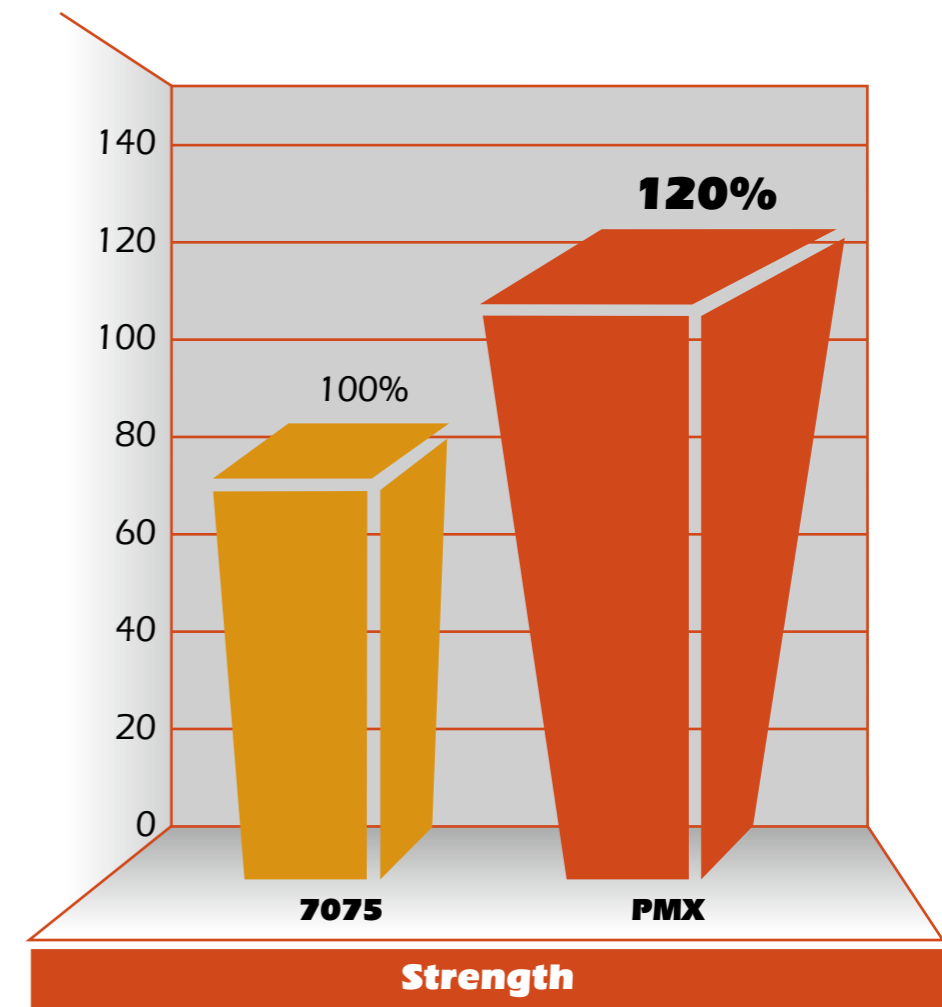


PMX is Premetec's unique material which can adopt in variety products. PMX can provide lighter weight and better strength. Compare to the 7075 material, PMX could rise 20% strength in the same weight.

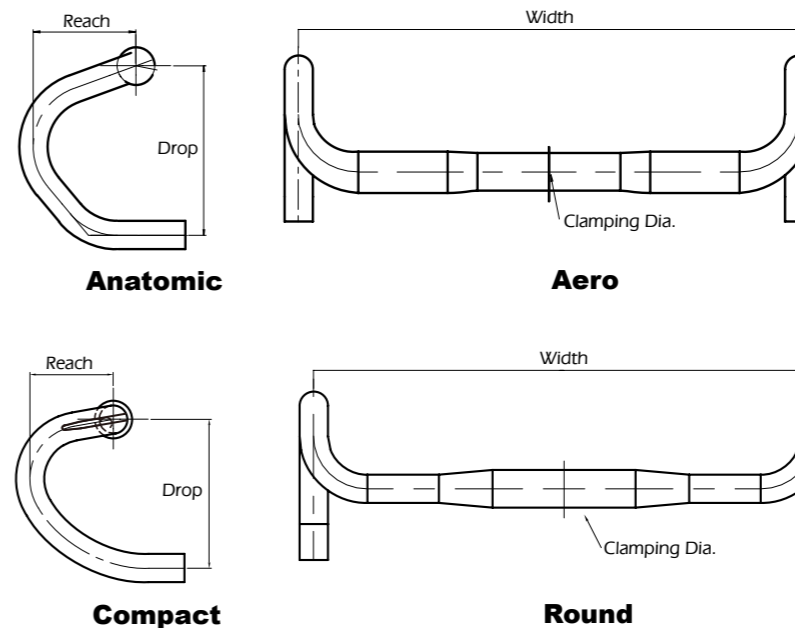
Integrated Capability, From Tubing To Branding

PREMETEC New Innovation-PMX

Premetec has integrated in-house capability for manipulating tubing including butting, swaging, heat treatment, taper walling and hydro-forming. We are not only a fabricator of metal products, but has in-house finishing capability to support end use requirements including anodize, laser etch, pad printing, silk screen, water decal and finished consumer packaging.



Technical Support of Road Bar



Riser Bar
Model > **Rockstone**
Material > **7050/2014/6061**
Width > **640-685**
Rise > **High/Mid/Low**
Back Sweep > **9**
Up Sweep > **5**
Clamping Dia. > **31.8**

**Riser Bar
Flat Bar**

**Road bar
TT bar**

GODSPEED

Model	Godspeed Aero	Godspeed Round	Godspeed Aero	Godspeed Round
Shape	Compact	Compact	Anatomic	Anatomic
Material	PMX/2014/6061			
Width	380-440			
Clamping Dia.	31.8			
Drop	125	125	140	140
Reach	70	70	85	85

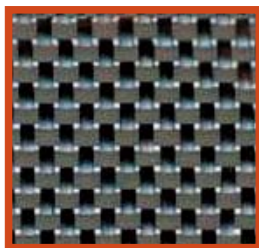


Flat Bar
Model > **Dragon**
Material > **7050/2014/6061**
Width > **600**
Clamping Dia > **31.8**
Back Sweep > **5**



Model > **Godspeed TT**
Material > **7075/6061**
Width > **400-440**
Clamping Dia. > **31.8**

Model > **Godspeed**
Material > **PMX/2014/6061**
Width > **380-440**
Clamping Dia. > **31.8**



3K fiber available

special design for cable routing



Model > **Godspeed Carbon**
Material > **UD Carbon Fiber**
Width > **400/420/440**
Weight > **200g @ 420mm**
Drop > **125**
Reach > **70**
Shape > **Round**
Clamping Dia. > **31.8**



Carbon

Model	Diameter	Length(mm)
EP-012	22.2	135
EP-012	25.4	135
EP-015	25.4	320
EP-015	26.8	320
EP-015	27.0	320
EP-015	27.2	320
EP-015	30.0	320
EP-015	30.9	320
EP-015	31.6	320

Pivotal Seat Post



Model > **Dargon Carbon**
Material > **UD Carbon Fiber**
Width > **600**
Weight > **118g**
Back Sweep > **5**
Clamping Dia. > **31.8**



Model > **Rockston Carbon**
Material > **UD Carbon Fiber**
Width > **660**
Weight > **158g**
Rise > **Low**
Back Sweep > **9**
Up Sweep > **5**
Clamping Dia. > **31.8**



Fork Tube

Model	7050 Alloy
Size	30-36mm
Roughness	ID Ra 0.2mm OD Ra 0.2mm
Length	320-540mm

**Hydro
Forming
Technology**

Hydro-forming Technology
 The shape with the passion
 The desire of getting superior quality
 The way we stand in Taiwan with no one in front



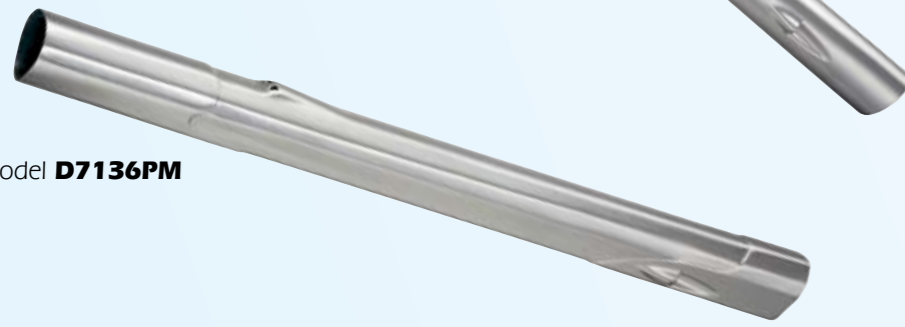
Model **D7116PM**



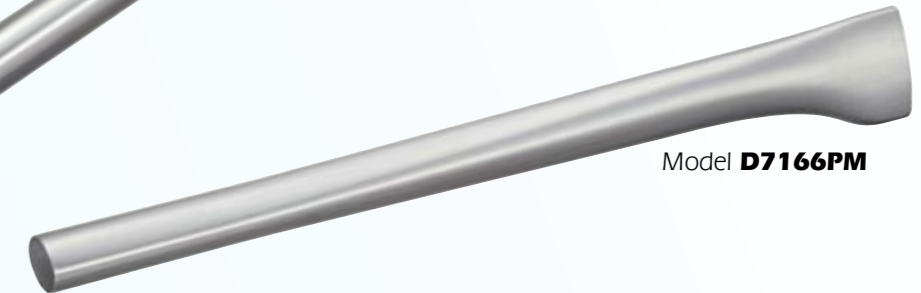
Model **D7050PM**



Model **D7136PM**



Model **D7166PM**



Down Tube

Down Tube

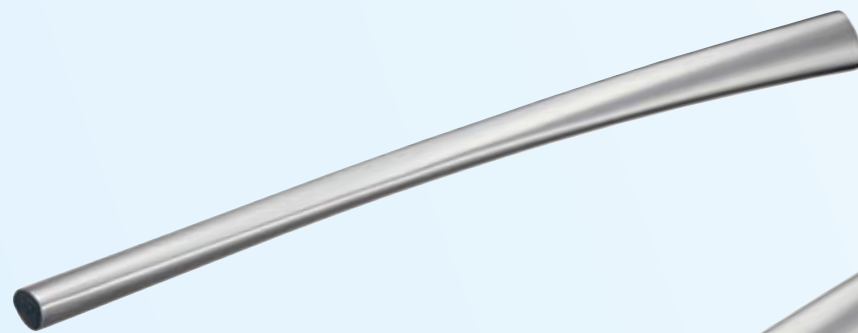
Model **D4116PM**



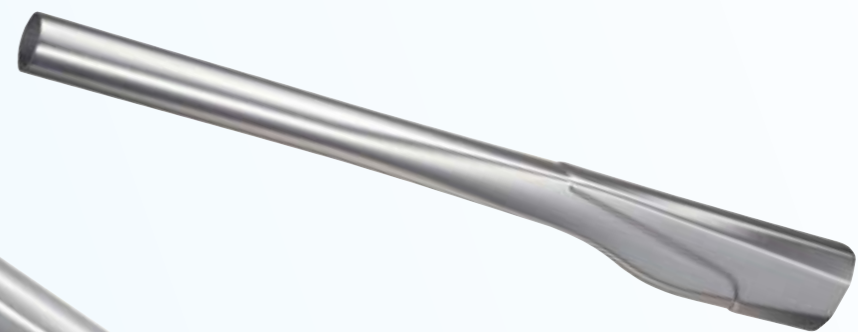
Model **D4106PM**



Model **D7146PM**



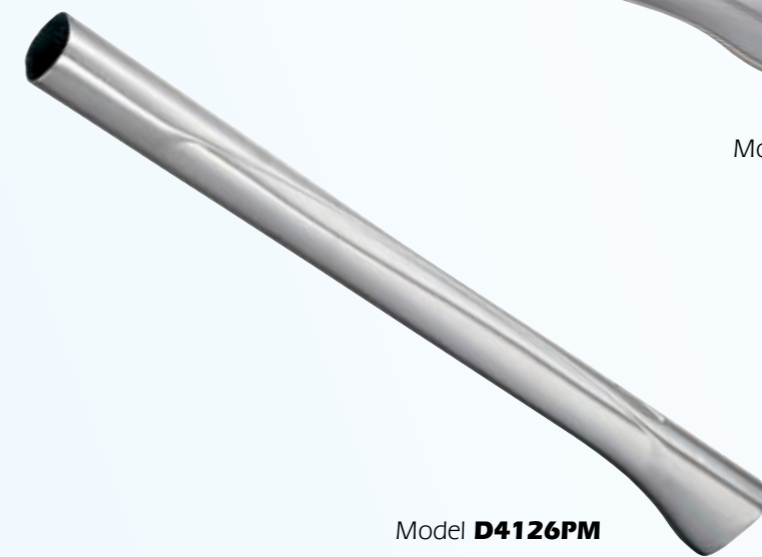
Model **D4166PM**



Model **D7040PM**



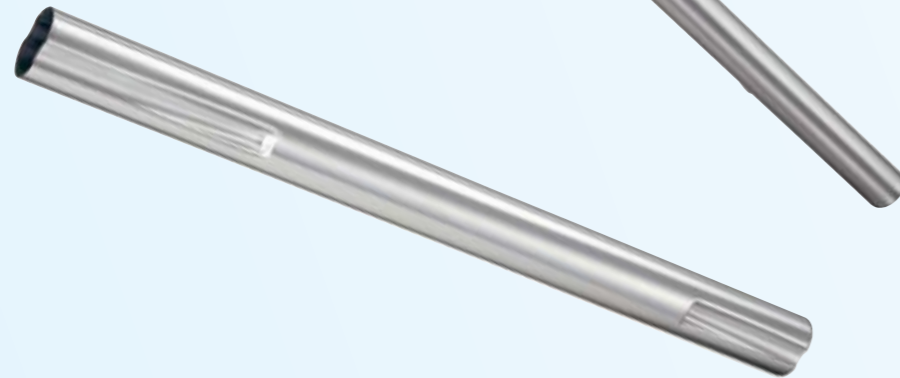
Model **D4126PM**



Model **T7076PM**



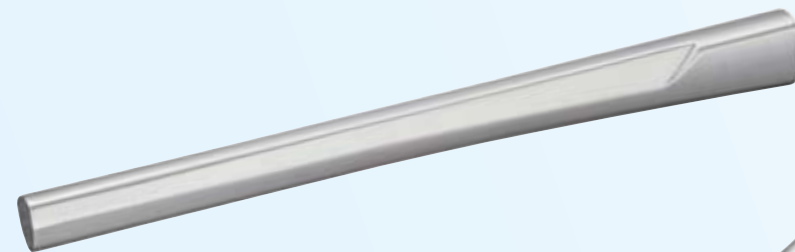
Model **T7086PM**



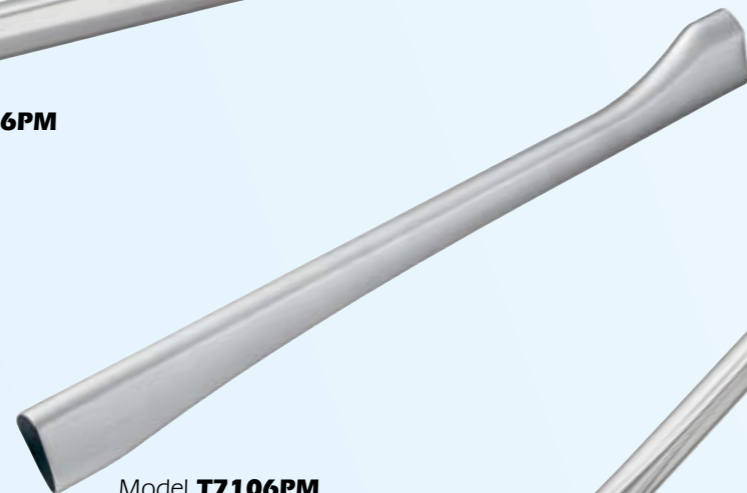
Model **T4126PM**



Model **T7116PM**



Model **T7106PM**



Model **E4136PM**



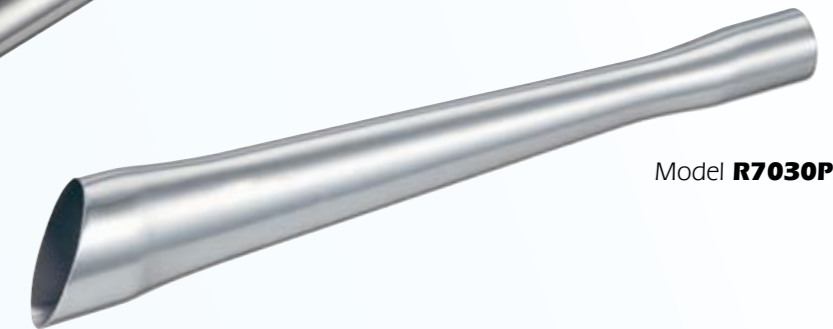
Top Tube

Others

Model **S4076PM**



Model **R7030PM**



Model **C7030PM**



Down Tube

Model	D7116PM	D4116PM	D7136PM	D7146PM	D7040PM	D7050PM	D7166PM	D4106PM	D4166PM	D4126PM
Material	6061 Butted	6061 Butted	6061 Butted	6061 Butted	6061 Butted	6061 Butted	6061 Butted	6061 Butted	6061 Butted	6061 Butted
Length(mm)	720	680	705	800	700	740	775	720	730	725
Weight(g)	395	360	425	390	390	440	430	470	580	400

Top Tube

Model	T7076PM	T7086PM	T4126PM	T7116PM	T7106PM	E4136PM
Material	6061 Butted	6061 Butted	6061 Butted	6061 Butted	6061 Butted	6061 Butted
Length(mm)	680	600	600	650	720	660
Weight(g)	300	300	230	360	300	340

Others

Model	S4076PM	R7030PM	C7030PM
Description	Seat tube	Seat Stay	Swing Arm
Material	6061 Butted	6061 Butted	6061 Butted
Length(mm)	700	337	460
Weight(g)	380	85	120